

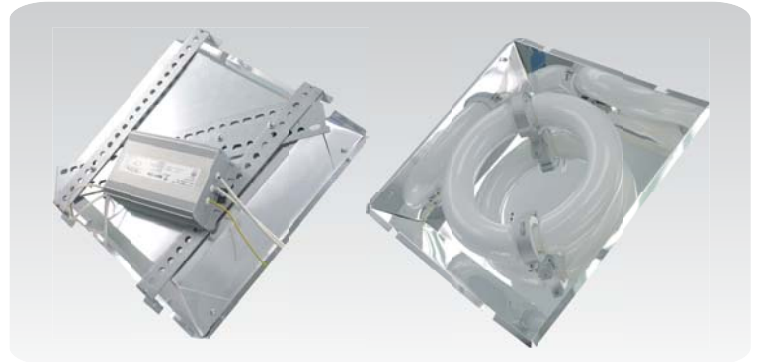
INDUCTION - Custom Parking/Area Retrofit Kit

100,000 Hour Life

The Next Generation of Lighting



Lithonia - AS2 Series



Neptun Certified Retrofit Kit
for Lithonia Lighting - AS2 Series

Specification:

| | |
|---------------------------------|------------------|
| - Ballast Type | Electronic |
| - Start Method | InstantON™ |
| - Hot Re-start | InstantON™ |
| - Universal Input Line Voltage | 120-277 VAC |
| - Input Line Frequency | 50/60 Hz |
| - Lamp/Ballast System Life | 100,000 Hrs. |
| - Lumen Maintenance @75,000Hrs | >70% |
| - Color Temperature | 5000°K |
| - Color Rendering Index (CRI) | above 83 |
| - Minimum Starting Temperature | -20°F |
| - Maximum Operating Temperature | 160°F |
| - Lamp Operating Frequency | 250 kHz |
| - Power Factor | > 0.98 |
| - Total Harmonic Distortion | < 10% |
| - Inrush Current Peak | < 10 Amp |
| - FCC Compliance | Part 18, Subp. C |

Applications, Features, and Benefits

- Custom retrofit kit for the Lithonia Lighting - AS2 Series fixtures
- Custom designed anodized aluminum reflector for increased illumination
- Bright White Light (5000°K) for greater visibility and safety
- High Quality - Glare Free light with CRI above 83
- Electronic Ballasts made with long life components
- InstantON flicker-free Cold Start and Hot Re-Start
- High Power Factor, Low THD Ballast technology
- Advanced phosphors for high Lumen Maintenance and high lumen output
- Made with Amalgam Technology
- Up to 20 year maintenance free operation
- Retrofit kit comes completely assembled for simple drop-in installation
- 5 year system warranty

Product Information - Retrofit Kit (Bulb-Ballast-Reflector)

| Item No. | Description | Watts | Initial Lumens | Line Voltage Supply | Line Current | Total Harmonic Distortion (THD) | Power Factor | Packaging Dimensions | | |
|-------------------|---------------------|-------|----------------|---------------------|---------------|---------------------------------|--------------|----------------------|------------------|-----------------|
| | | | | | | | | Width | Length | Height |
| LLAS2-40W-RK-UNV | Custom Retrofit Kit | 40 | 3,200 | 120-277 VAC | 0.35-0.15 Amp | <10% | 0.98 | 18 in. 457 mm | 18 in. 457 mm | 8 in. 203 mm |
| LLAS2-80W-RK-UNV | Custom Retrofit Kit | 80 | 6,400 | 120-277 VAC | 0.69-0.30 Amp | <10% | 0.98 | 18 in. 457 mm | 18 in. 457 mm | 8 in. 203 mm |
| LLAS2-100W-RK-UNV | Custom Retrofit Kit | 100 | 8,000 | 120-277 VAC | 0.87-0.37 Amp | <10% | 0.98 | 18 in. 457 mm | 18 in. 457 mm | 8 in. 203 mm |
| LLAS2-120W-RK-UNV | Custom Retrofit Kit | 120 | 9,600 | 120-277 VAC | 1.05-0.45 Amp | <10% | 0.98 | 18 in. 457 mm | 18 in. 457 mm | 8 in. 203 mm |
| LLAS2-150W-RK-UNV | Custom Retrofit Kit | 150 | 12,000 | 120-277 VAC | 1.31-0.56 Amp | <10% | 0.98 | 18 in. 457 mm | 18 in. 457 mm | 8 in. 203 mm |
| LLAS2-175W-RK-UNV | Custom Retrofit Kit | 175 | 14,000 | 120-277 VAC | 1.53-0.66 Amp | <10% | 0.98 | 18 in. 457 mm | 18 in. 457 mm | 8 in. 203 mm |

Product Weight = 5-7 lbs.

NEPTUN Light, Inc.
Questions and Comments:
service@neptunlight.com
Toll-Free: 1-888-735-8330

NEPTUN
LIGHT®

1.) REMOVE EXISTING COMPONENTS

- A.) Disconnect power to fixture.
- B.) Open fixture housing by removing screws on lens.
- C.) Remove existing reflector, socket, ballast, ignitor, ballast plate, reflector straps and any other existing components.



2.) MOUNT NEW COMPONENTS

- A.) Place reflector with pre-installed ballast and bulb into the fixture. (Fig. A)
- B.) Match the supplied holes with the existing lens screw holes. (Fig. B)
- C.) Secure reflector to housing with existing reflector strap screws.
- D.) Wire the ballast to the power supply.
- E.) For wiring diagram, see Pg. 2
- F.) Remount fixture and supply power to fixture.

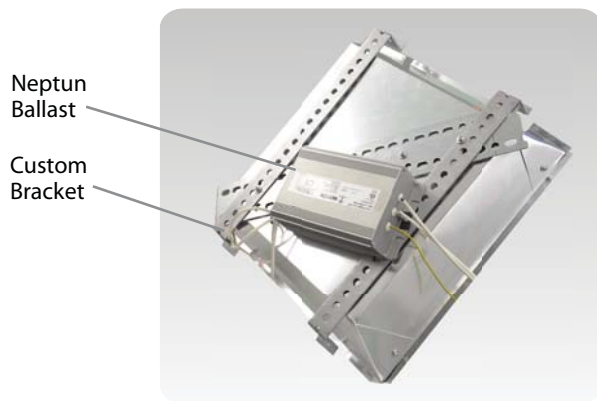


Fig. A

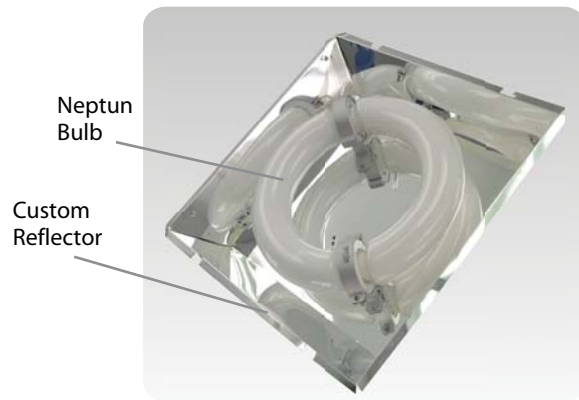


Fig. B



Secure Reflector with existing screws

CAUTION!

DISCONNECT POWER SUPPLY BEFORE INSTALLATION OR MAINTENANCE.
 INSTALLATION OF THIS PRODUCT SHOULD BE DONE BY A FULLY QUALIFIED AND
 LICENSED ELECTRICIAN OR TECHNICIAN.

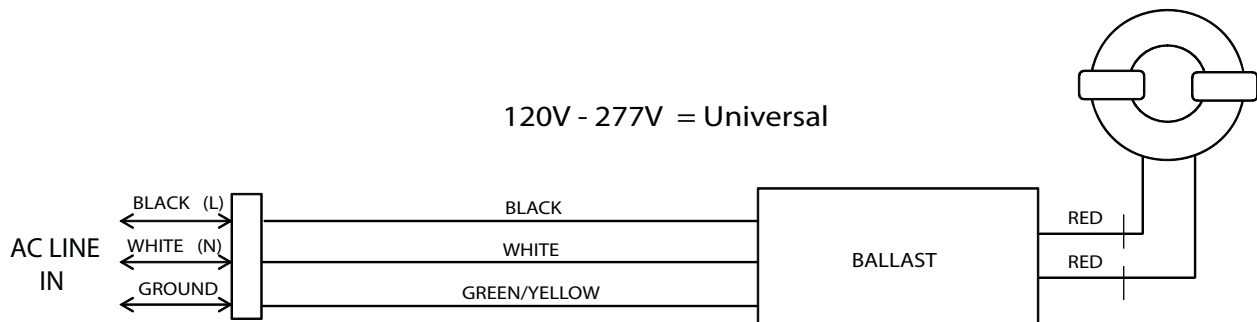
INFORMATION

- A.) The Lithonia Lighting AS2 series fixtures can be retrofitted using a Neptun custom Circline Retrofit Kit.
- B.) This fixture requires a custom designed Neptun reflector and brackets
- C.) This fixture is retrofitted using a Neptun 150W induction bulb and Electronic Ballast.
- D.) This retrofit is available in 40W, 80W, 100W, & 120W, 150W, & 175W
- E.) The Neptun Electronic ballast is for universal voltage 120V - 277V.
- 480V system also available



ORDERING INFORMATION

- 40 Watt Bulb, Ballast, & Reflector = LLAS2-40W-RK-UNV
- 80 Watt Bulb, Ballast, & Reflector = LLAS2-80W-RK-UNV
- 100 Watt Bulb, Ballast, & Reflector = LLAS2-100W-RK-UNV
- 120 Watt Bulb, Ballast, & Reflector = LLAS2-120W-RK-UNV
- 150 Watt Bulb, Ballast, & Reflector = LLAS2-150W-RK-UNV
- 175 Watt Bulb, Ballast, & Reflector = LLAS2-175W-RK-UNV



CAUTION!

DISCONNECT POWER SUPPLY BEFORE INSTALLATION OR MAINTENANCE.
INSTALLATION OF THIS PRODUCT SHOULD BE DONE BY A FULLY QUALIFIED AND
LICENSED ELECTRICIAN OR TECHNICIAN.